

# WARMINSTER PLAN BEE

## OXENDENE MINI MEADOW AND OTHER PROJECTS

In support of local biodiversity



Brown-banded  
bumblebee



Large Scabious  
Mining bee



Sainfoin bee



Broken-belted  
bumblebee



Green Hairstreak butterfly



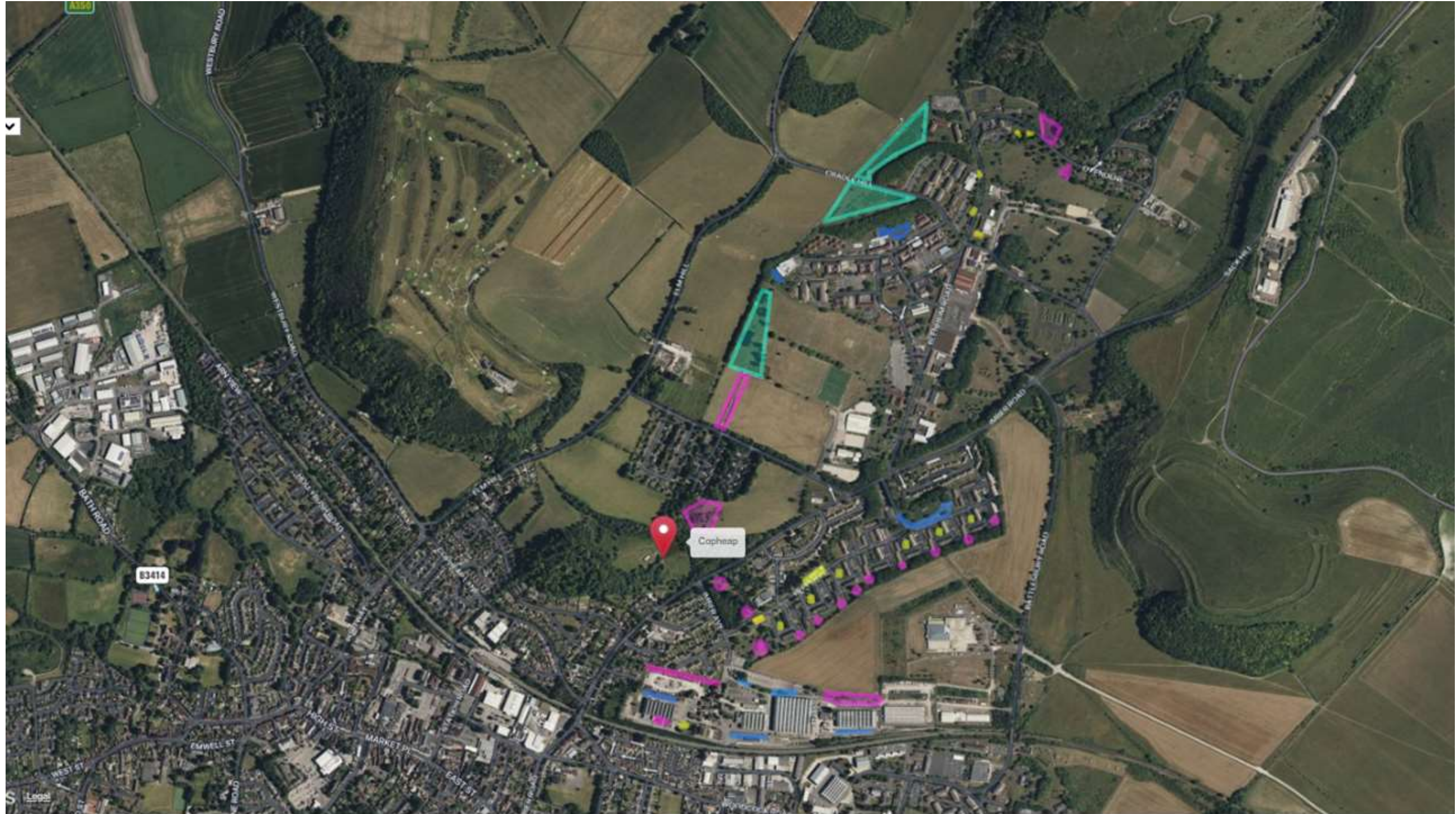
Marsh Fritillary butterfly



Adonis Blue butterfly

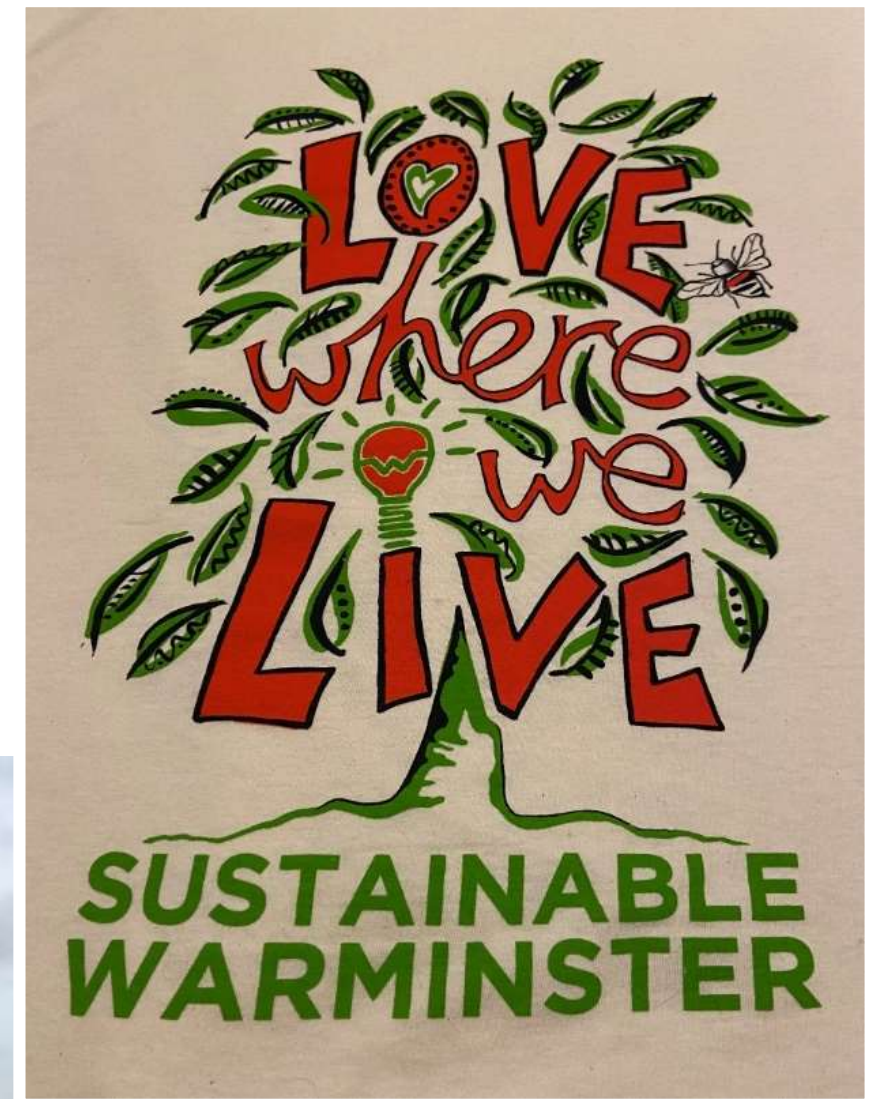
# GARRISON ENHANCEMENT MAP

Each establishment has its own connectivity plan



# WORKING TOGETHER

In partnership with local group Sustainable Warminster, volunteers collected seed on Salisbury Plain



### Sustainable Warminster Launches Plan Bee

A new initiative involving Sustainable Warminster, establishments within MOD Warminster Garrison, the green-fingered support of local Buriton Garden Nursery and many more potential partnerships was launched last week.

The project called 'Warminster Plan Bee' uses the ecological mantra of 'bigger, better and more joined up' for enhancing biodiversity at its core. It brings together and supports local projects across Warminster and its surrounding villages to enhance green space for pollinators connecting one of the largest B-Lines that is SPTA with the county Wildlife site of Copheap and across other important sites for nature like the Common Wildflower meadow, Grovelands, Smallbrook Meadows and the Town Park and saving the biodiversity rich Damask meadow.

So far these projects include Oxendene Service Families Accommodation and Waterloo Lines mini meadows along with Imber Lines Bee Bank with lots more in the pipeline such as East along the A36 to Knook and way out West from Arne to Cley Hill.

Sustainable Warminster has already asked the town council to contact schools and local businesses to ask them to review their grounds

maintenace plan to incorporate No Mow May and/or a more sympathetic mowing regime to support pollinators and asks all gardeners to join 'Warminster Plan Bee' by growing or allowing wildflowers to flourish in their gardens and help pollinators.



All abuzz for Plan Bee when details were revealed at Spring at the Park recently.



# 2023 ACHIEVEMENTS

## Warminster Plan Bee



# OXENDENE PADDOCK RESTORATION



LWC Gurkha Coy  
repaired the fence



LWC conservation  
volunteers pulling up  
ragwort

# COPHEAP COUNTY WILDLIFE SITE

Veolia team working on this important connecting site





**Horses, from  
Warminster Saddle  
Club, grazing the  
paddock at Oxendene**



**Sheep grazing Copheap  
County Wildlife site**

# OXENDENE MINI MEADOW SPRING 2024

Working with Service families to plant scabious plugs and sow meadow seed. The families now look after the meadow.



# OXENDENE Paddock SPRING 2024

The paddock was grazed by horses over winter and now has lots of scabious plants.



Oxendene mini meadow had an early grass cut and is now in full bloom with ox-eye daisies.



# OXENDENE PADDOCK AUTUMN 2024



A slow worm was discovered on a nature discovery morning held with local families.



A large scabious mining bee on a scabious flower - one of our target bee species.



A recent discovery of a rugged oil beetle.

A Natural England Back from the Brink species.

# OTHER PROJECTS

LSS Grounds Maintenance Team at Westdown Camp saw enhancement opportunities when old accommodation huts were removed. The images show the amount of flora they have created.



# LWC OLD GOLF COURSE RESTORATION

Local DTE Tenant Farmer Joe Duffosee returned to take a hay cut in the field, removing around 30 bales, and starting the 'green-hay experiment' whereby he spreads a section with freshly cut green hay from a chalk grassland rich SPTA donor field in early Oct 2024 and in early Spring 2025 to see which give the best results. He also plans to get the field inspected to help with the organic side of the farm.



LWC volunteers raking in seed.



# LWC CONSERVATION VOLUNTEERS

The volunteers had a good day removing pine saplings along the Berril Valley on SPTA.



**AFTER**



**BEFORE**

# WORKING WITH THE SPTA CONSERVATION GROUP

The Imber Bus Day Patron and St Giles's Church Imber have pledged to support Warminster Plan Bee. Restoration work is ongoing in the Baptist Graveyard.



# FUTURE PROJECTS

- Brown Hairstreak egg hunt
- House Martin survey
- Butterfly transect survey
- Bird nest box survey
- LWC old interceptor water feature



All projects are supported by DIO  
Environmental Engagement team



# IMBERBUS 2024

In 2009, a group of bus industry professionals achieved a long standing ambition to run a vintage bus service from Warminster in Wiltshire, to the abandoned village of Imber on the Salisbury Plain. It proved to be so popular that it has now become an annual event, with most journeys continuing across the Plain to parts of Wiltshire rarely seen by ordinary public transport users.

There are only a few days each year on which the road through Imber is open to the public and this year the Imberbus service will run on **Saturday 17th August** when up to 30 old and new Routemaster buses (plus a few guest vehicles) will operate from Warminster to Imber and other points on Salisbury Plain.

Lord Peter Hendy of Richmond Hill and Imber in the County of Wiltshire coordinates the Imberbus trips. Last year, the event saw record-breaking attendance, with over 4,000 people riding the buses to the village, raising over £38,000 for charities in the process.

Lord Peter Hendy has also very kindly supported the Warminster Plan Bee initiative with a donation to buy wildflower seeds and plants.



# IMBER BUZZ DAY 2024

Riding on the coat tails of the ImberBus 2024 the SPTA Conservation Group and Sustainable Warminster had a successful day promoting Warminster Plan Bee project, which aims to reconnect flora rich areas with wild flower enhanced parcels of land which act as stepping stones from the rich biodiversity of the MOD Salisbury Plain Training Area to other smaller but equally important areas of chalk grassland such as Copheap Hill and out to Cley Hill. This will help extend the distribution range of rare species, making Warminster and its surrounding areas a richer and more species diverse environment.

Warminster Plan Bee wishes to thank all those who have been involved, especially Neil Skelton from St Giles Church Imber and Lord Peter Hendy of Richmond Hill and Imber in the County of Wiltshire for their donations to the project and affording us the opportunity to reach out to such a large visiting audience circa 5,000 from all across the UK.

